



GMT MONTHLY MEMBERSHIP PROGRESS REPORT

Results as of: 6/30/2020

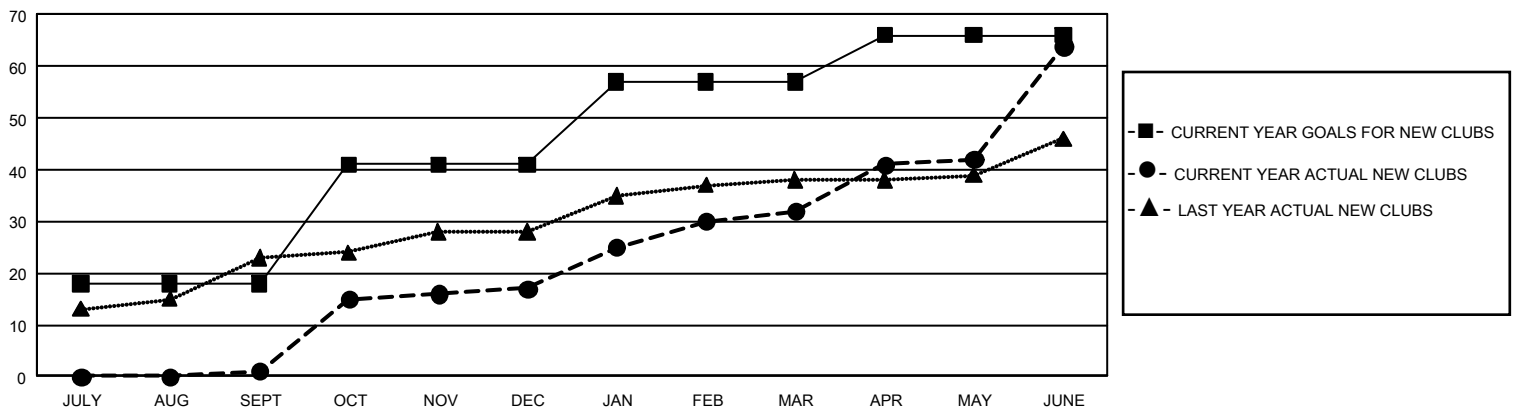
GMT Constitutional Area 8, Group B

GMT: OPEN

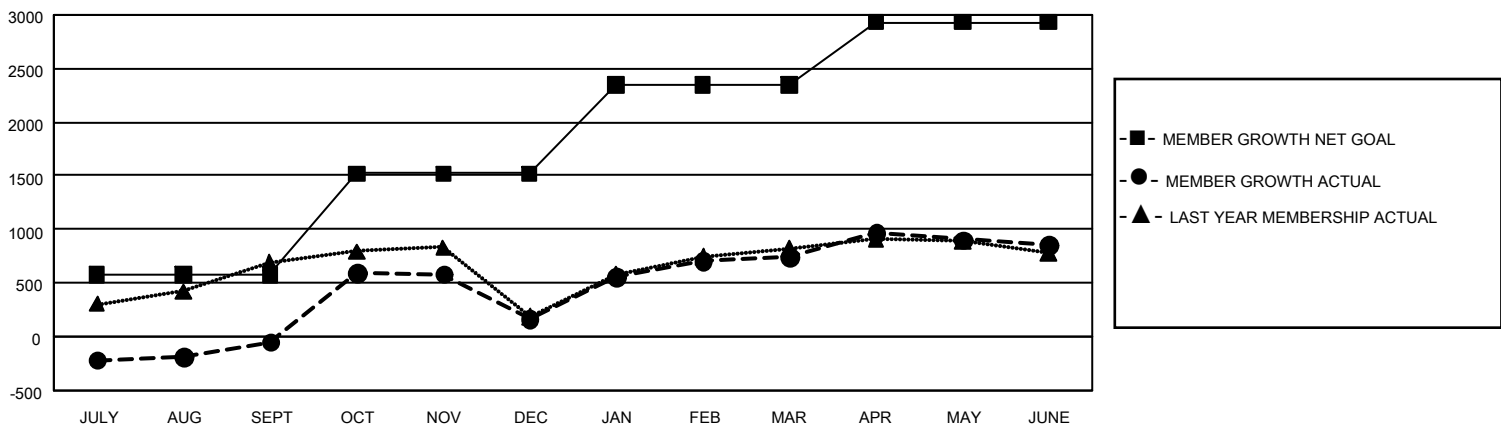
REPORT DOES NOT INCLUDE CLUBS IN UNDISTRICTED AREAS.

Clubs				Members			
RESULTS FOR 2019-2020				RESULTS FOR 2019-2020			
QUARTER	NEW CLUB GOAL	NEW CLUBS	DROPPED CLUBS	QUARTER	MEMBER GROWTH NET GOAL	MEMBER GROWTH ACTUAL	DROPPED MEMBERS ACTUAL (including transfers)
JULY/AUG/SEPT	54	1	4	JULY/AUG/SEPT	1,725	440	466
OCT/NOV/DEC	69	16	16	OCT/NOV/DEC	2,835	1,041	781
JAN/FEB/MAR	48	15	1	JAN/FEB/MAR	2,475	839	198
APR/MAY/JUNE	27	32	0	APR/MAY/JUNE	1,755	1,228	1,012

GOALS AND ACTUAL NEW CLUBS CUMULATIVE



GOALS AND ACTUAL MEMBERS CUMULATIVE



DROPPED CLUBS: 21	385 CLUBS OF 537 ADDED 1 OR MORE NEW MEMBERS	<u>GENDER DISTRIBUTION</u> MALE 7,398 (58.45%) FEMALE 5,260 (41.55%)
<u>DROPPED MEMBERS</u> DECEASED 70 CLUB CANCELLED 299 OTHER 2,088 <hr/> TOTAL 2,457	CLICK HERE FOR CUMULATIVE MEMBERSHIP DATA	TOTAL FAMILY UNIT MEMBERS 1,490 FAMILY MEMBERS PAYING HALF DUES 897